



# SEECQUEL

Schrader Environmental Education Center: Question. Understand. Excite. Learn.

## Discovering Nature Through Play

November 18, 2012



### Team:

Daniel Aum  
Emmanuel Eytan  
Prateek Gudihal  
Garret Kimball  
Martin Mittner  
Christopher Thompson

### Advisor:

Shirley Saldamarco

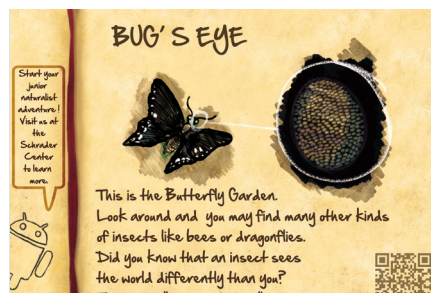
Oglebay Institute



Imagining the Imagination



ETCglobal  
Carnegie Mellon



Our Bug's Eye Podium



For more info visit: <http://www.etc.cmu.edu/projects/seecquel>



## Discovering Nature Through Play

November 18, 2012

### Week in Review

Early this week, we had a technical breakthrough that allowed us to actually get the Bug's Eye View activity working. Our artists also got the last podium done (seen below). The big focus for this week, though, was polish, in preparation for our last playtest at the Schrader Center on Saturday, and for Softs, which will occur on the 26th.

### Playtest

On Saturday we visited the Schrader Center again to conduct a playtest of our full experience. We had three staggered groups of guests in our demographic, accompanied by our client and SEEC staff, go through the whole experience from start to finish at the actual spots we want the podiums to go (at our previous playtest at SEEC, heavy rains forced us to do some activities at alternate

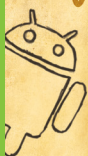
locations). While the test was not without glitches, our playtesters had a great time with the activities, and the SEEC staffers who joined us for the test were very happy with what they saw. Afterwards, we took the opportunity to shoot most of our 3 minute video, including a brief interview with our client.

### The Coming Week

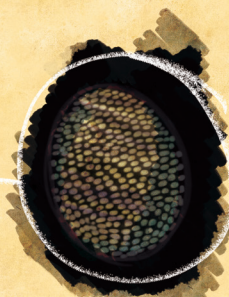
Softs is coming up soon, which means we need to spend this week making sure that everything is as polished as possible. We also need to edit and polish our 3 minute and 30 second promo videos, and ensure that we have all the appropriate documentation for our archives.

This is our Bug's Eye View Podium

Start your junior naturalist adventure! Visit us at the Schrader Center to learn more.



### BUG'S EYE



This is the Butterfly Garden. Look around and you may find many other kinds of insects like bees or dragonflies. Did you know that an insect sees the world differently than you? They have "compound eyes".

