



SEECQUEL

Schrader Environmental Education Center: Question. Understand. Excite. Learn.

Discovering Nature Through Play

October 12, 2012



Team:

Daniel Aum
Emmanuel Eytan
Prateek Gudihal
Garret Kimball
Martin Mittner
Christopher Thompson

Advisor:

Shirley Saldamarco

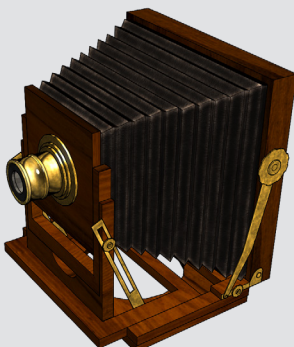
Oglebay Institute



Imagining the Imagination



ETCglobal
Carnegie Mellon



Our camera icon.



The icon for scanning QR codes



A diagram of our planned UI layout.

For more info visit: <http://www.etc.cmu.edu/projects/seecquel>



Discovering Nature Through Play

October 12, 2012

Week in Review

The avatar's intro is an important part of the experience, since it is the guest's first exposure to the experience. We have rewritten it multiple times to make sure it achieves what we need it to. Our artists have also made excellent progress with the icons, with two of them already fully animated. Activity implementation has been going smoothly, and our programmers are familiarizing themselves with Scaleform, which should make implementation of our UI (blocked out below), very simple. Our first playtest is scheduled for today at 6:30. Also, our half sheets and posters arrived just this morning, and they look very nice.

provided a progress update and showed off our current art progress, except the podium (below), which was completed shortly after the meeting.

Client Meeting

At our client meeting this week, we

What the second podium will look like.

